

AVAILABLE: 4,792sf Shop on 2.8 Acres

489 Hurricane Shoals Rd, Lawrenceville, GA

4,792sf Shop Building

On 2.78 Acre Site

489 Hurricane Shoals Rd.

Lawrenceville, Gwinnett County, GA

Atlanta MSA

Building: 4,792 sf with 1,200sf air-conditioned office/reception area

Bays: Four 16ft doors, One 12ft door

Land: 2.8+/- acres

Zoned: LM- Light Manufacturing

Ideal for: Heavy Equipment Sales, Maintenance and Rental, Landscaping Company, Light Manufacturing.

Location: Gwinnett Airport Area, GA-316, Lawrenceville

Rate: \$10,000/month



Exclusive Agent:

Tom Hunter: 770-289-2792

Thomas Hunter Associates, Inc.

770-682-8552 770-277-6843 fax

thomashunter@thomashunter.com

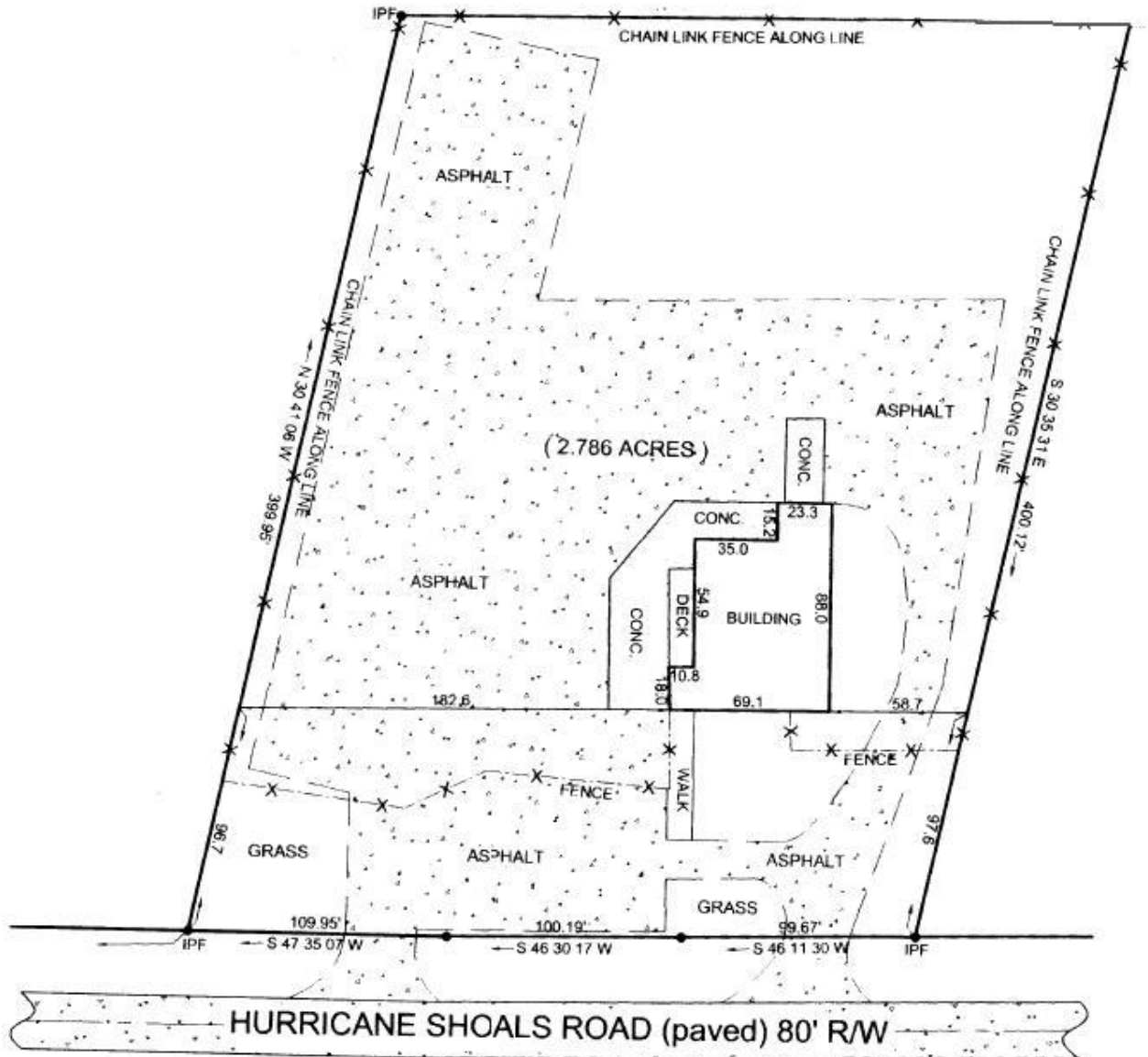
www.thomashunter.com

**THOMAS HUNTER
ASSOCIATES, INC.**

Information was obtained from sources believed to be reliable, but no liability is assumed for errors or omissions.

AVAILABLE: 4,792sf Shop on 2.8 Acres

489 Hurricane Shoals Rd, Lawrenceville, GA



Exclusive Agent:

Tom Hunter: 770-289-2792

Thomas Hunter Associates, Inc.

770-682-8552 770-277-6843 fax

thomashunter@thomashunter.com

www.thomashunter.com

**THOMAS HUNTER
ASSOCIATES, INC.**

Information was obtained from sources believed to be reliable, but no liability is assumed for errors or omissions.