

FOR SALE .92 ACRE SITE

Potential O&I or Commercial

1925 Lawrenceville Suwanee Rd, Gwinnett County

Potential Office or Commercial
1925 Lawrenceville Suwanee Rd.
Lawrenceville, Gwinnett County, GA

Size: .92+/- Acres

Location: Lawrenceville Suwanee
near Tab Roberts, Dean & Taylor
Roads.

Traffic: 37,239 09/09/2004

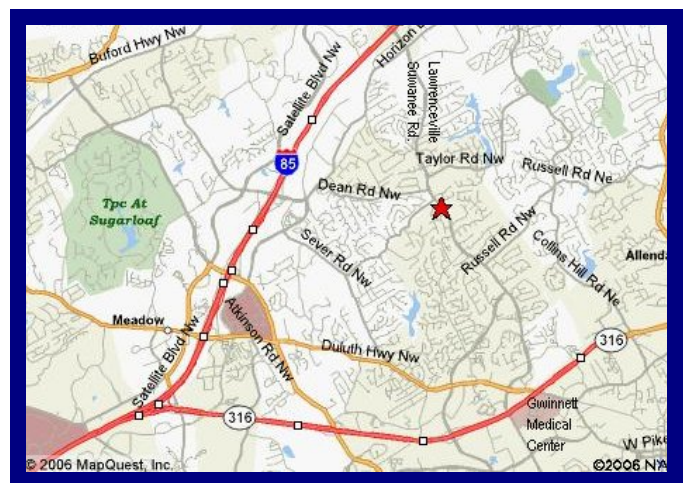
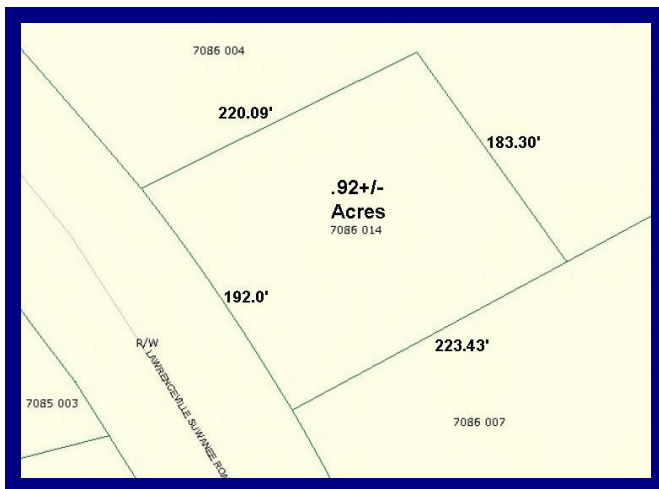
Frontage: 192 +/- Feet

Utilities: All available

Ideal for: Free-standing professional
office or small commercial building.

Quick Access to Gwinnett Medical

Price: \$295,000



Exclusive Agent:

Tom Hunter: 770-289-2792

Thomas Hunter Associates, Inc.

770-682-8552 770-277-6843 fax

thomashunter@thomashunter.com

www.thomashunter.com

**THOMAS HUNTER
ASSOCIATES, INC.**

Information was obtained from sources believed to be reliable, but no liability is assumed for errors or omissions.