

FOR SALE: 4+/- ACRE ASSEMBLAGE

Canton Hwy at Shallowford Rd, Marietta, GA

4+/--Acre Corner Assemblage
NE Corner of Canton Hwy and
Shallowford Road
Marietta, Cobb County, GA
Atlanta MSA

Size: 4+/- Acres (with closed roads)

Location: NE Marietta/Woodstock

Zoned: NRC, C-2, LI, R100

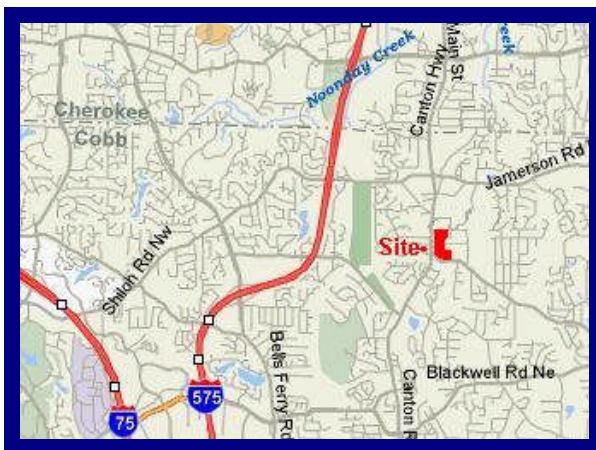
Utilities: All Available

Traffic: 29,287 (2004)

Frontage: Canton Rd: 786+/- feet;
Shallowford Rd: 378+/- feet: Also,
potential access from side roads

Ideal for: Neighborhood Retail Center,
Drug Store, Bank, C-Store, Fast Food,
Professional Buildings, Free-standing
Retail Buildings; Office Condos.

Price: \$1,753,000. Price does not
include ROW for closed roads.



Tom Hunter: 770-289-2792

Thomas Hunter Associates, Inc.

770-682-8552 770-277-6843 fax

thomashunter@thomashunter.com

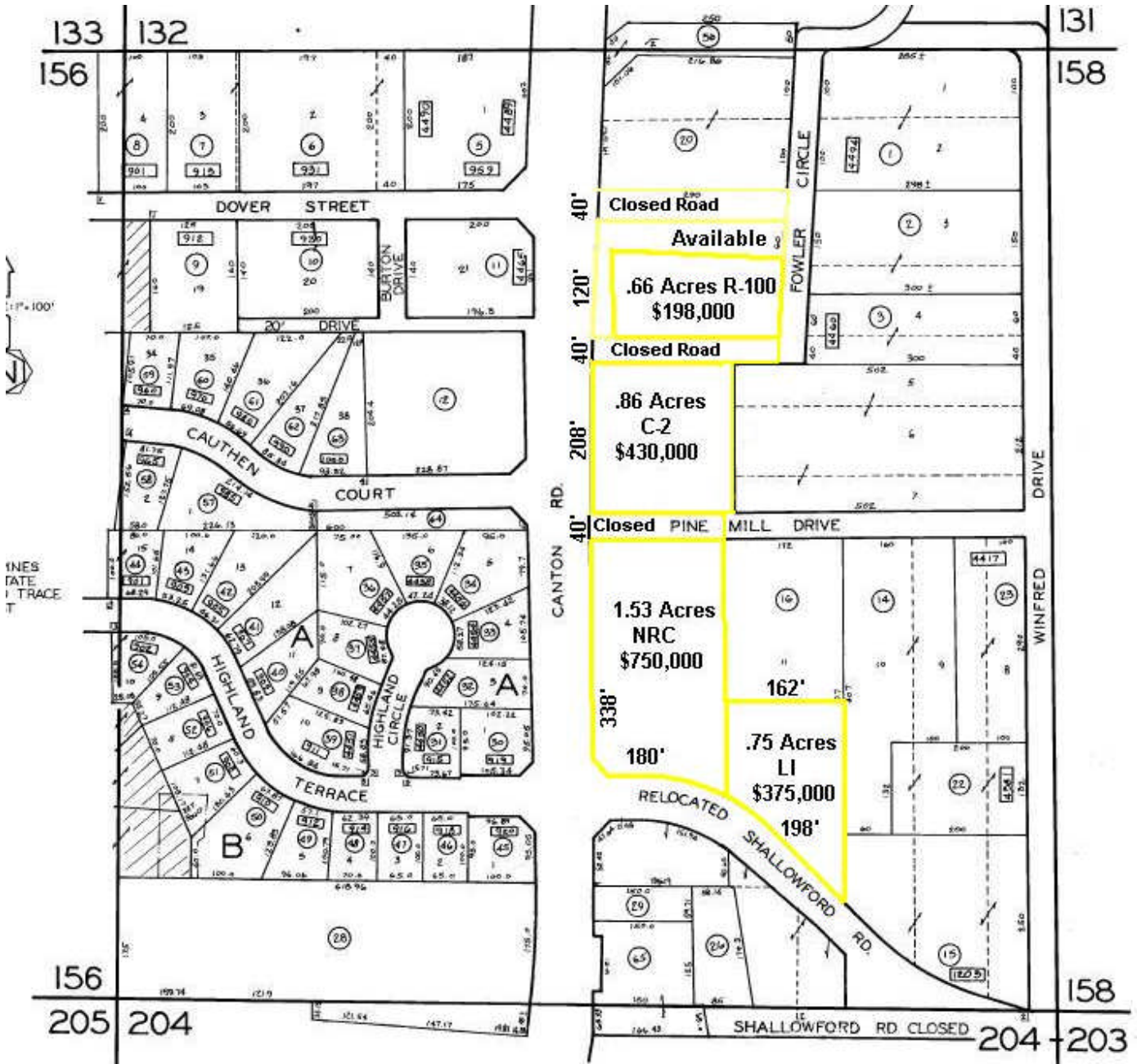
www.thomashunter.com

THOMAS HUNTER
ASSOCIATES, INC.

Information was obtained from sources believed to be reliable, but no liability is assumed for errors or omissions.

FOR SALE: 4+/- ACRE ASSEMBLAGE

Canton Hwy at Shallowford Rd, Marietta, GA



Tom Hunter: 770-289-2792
Thomas Hunter Associates, Inc.
 770-682-8552 770-277-6843 fax
thomashunter@thomashunter.com
www.thomashunter.com

**THOMAS HUNTER
 ASSOCIATES, INC.**

Information was obtained from sources believed to be reliable, but no liability is assumed for errors or omissions.